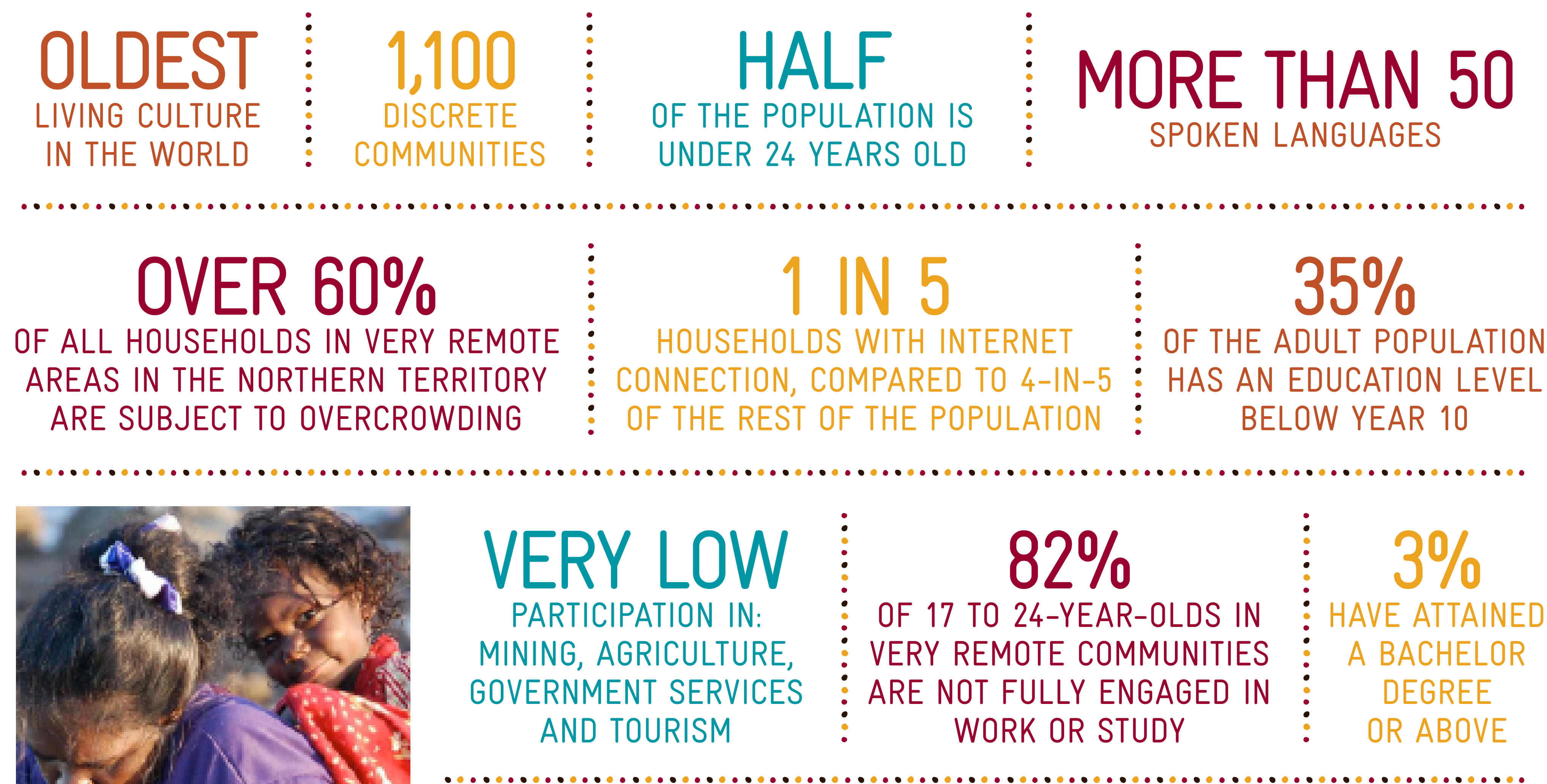


# A SNAPSHOT OF REMOTE AUSTRALIA



## ABORIGINAL AND TORRES STRAIT ISLANDERS IN REMOTE AUSTRALIA:



References:

ABS. (2012). 2011 Census - Counting Persons, Place of Usual Residence. Retrieved January 2015, from Australian Bureau of Statistics  
<http://www.abs.gov.au/websitedbs/censushome.nsf/home/tablebuilder?opendocument&navpos=240>

ABS. (2012), 2011 – Regional Population Growth, Australia  
<http://www.abs.gov.au/ausstats/abs@.nsf/Products/3218.0~2011-12~Main+Features~Main+Features?OpenDocument>

AIHW 2013. Aboriginal and Torres Strait Islander Health Performance Framework 2012: detailed analyses. Cat. no. IHW 94. Canberra: AIHW.  
Viewed 27 January 2015 <http://www.aihw.gov.au/publication-detail/?id=60129543821>

Rola-Rubzen, Maria Fay (2011). The Anatomy of the Australian Entrepreneur: Understanding micro, small and medium business entrepreneurs in Australia. Ninti One Limited. Alice Springs  
[http://www.nintione.com.au/resource/NintiOneReport\\_AnatomyoftheAustralianEntrepreneur.pdf](http://www.nintione.com.au/resource/NintiOneReport_AnatomyoftheAustralianEntrepreneur.pdf)

The Pew Charitable Trusts (Oct 2014) The Modern Outback. Nature, People and the future of remote Australia. <http://www.pewtrusts.org>